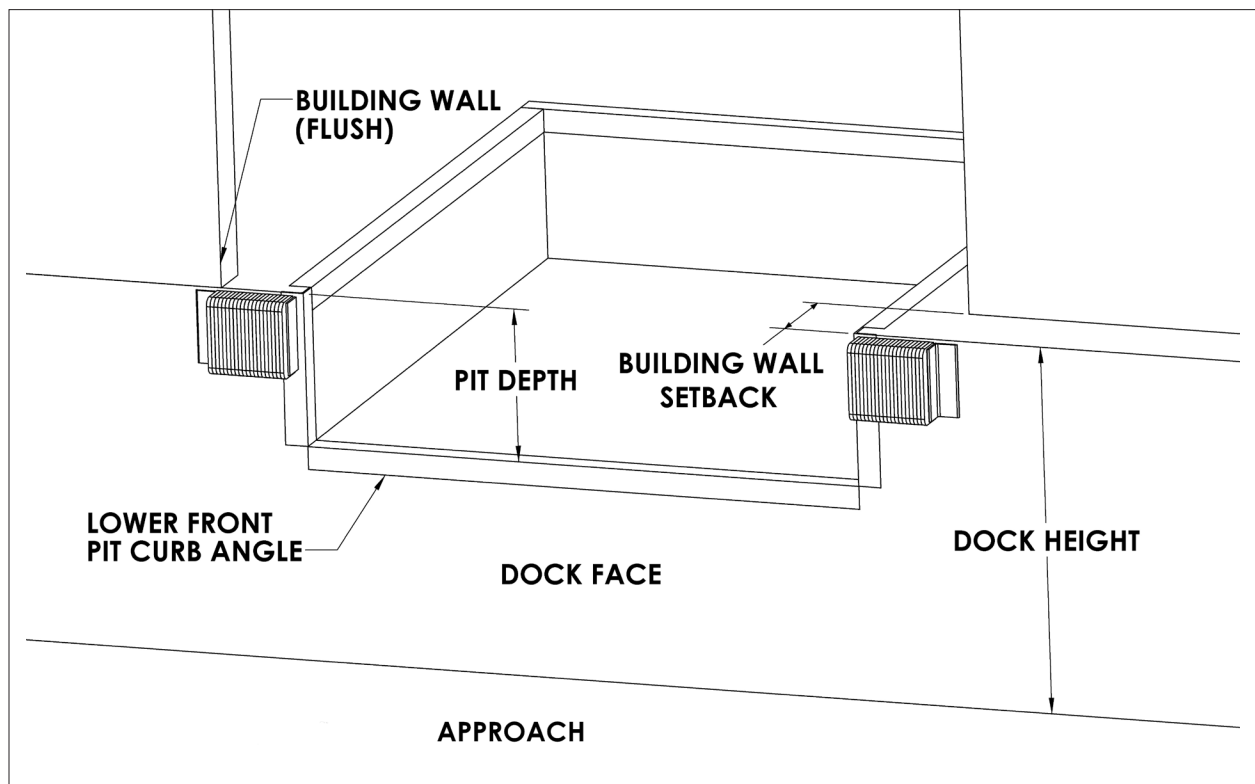




## SURVEY INFORMATION

### INSTRUCTIONS

1. Survey must be completed based upon conditions at time of installation.
2. Dock face must be clear of any obstructions prior to installation of the Lock & Load™.
3. Lights and signs must be mounted in full view of forklift and tractor-trailer operations.
4. Examples of why bracketing may be required:
  - A. Sloped approach greater than 1/2" per foot.
  - B. Bumper projection over 4". (Bumpers are manufactured to nominal sizes; actual projection must be verified.)
  - C. Insufficient embedded front pit curb angle.
  - D. 24" deep pits.
5. Other than solid concrete dock face (6" thick minimum).
6. Hollow "D" and flex steel bumpers not acceptable.



Customer: \_\_\_\_\_ NOVA #: \_\_\_\_\_  
Surveyed by: \_\_\_\_\_ Date: \_\_\_\_\_ Quantity: \_\_\_\_\_

1. Dock/Door #'s: \_\_\_\_\_

2. Is the Dock Leveler Truck Activated? If yes, consult factory.

3. Lip Length: \_\_\_\_\_ Inches **NOTE:** Enter "0" for no leveler.

4. Lip Hinge Type

Closed (piano/spool)  Fixed (no hinge)  Open (lug)  N.A. (no leveler)

5. Barrier Lip

Yes  No

6. Pit Depth/Front Frame Depth: \_\_\_\_\_ Inches

**NOTE:** Enter front frame height for levelers on self standing frames. Enter "0" if no leveler or EOD type leveler.

7. Dock Height: \_\_\_\_\_ Inches

8. Dock Face/Lock & Load™ Mounting Surface

Concrete, solid tilt-up precast, min 6 thick  Concrete, min 6" thick, embedded mounting plate  
 Brick/cinder block, hollow tilt-up/precast  Stub wall (partial wall w/open pit)  
 Legs/Self Standing Frames - (Consult Factory)  Other

9. Is the pit floor material concrete?

Yes  No

10. If pit does not exist, is the dock floor concrete?

Yes  No

11. Is there an existing pit floor plate bracket?

Yes  No

12. Bumper Projection: \_\_\_\_\_ Inches

13. Lower Front Pit Curb Angle

3 x 3  4 x 4  None  Pan Material  Other

14. Wall Position to Dock Face

Flush  Protruding  Set Back

15. Amount of Wall Set Back/Protrusion: \_\_\_\_\_ Inches

16. Cantilever Height Off Approach: \_\_\_\_\_ Inches

17. Projection of Cantilever: \_\_\_\_\_ Inches

18. Sub-frame Position to Dock Face:

Flush  Protruding  Set Back  Not Applicable

19. Sub-frame Set Back/Protrusion: \_\_\_\_\_ Inches

**20. Will Yard Jockeys be Used:**

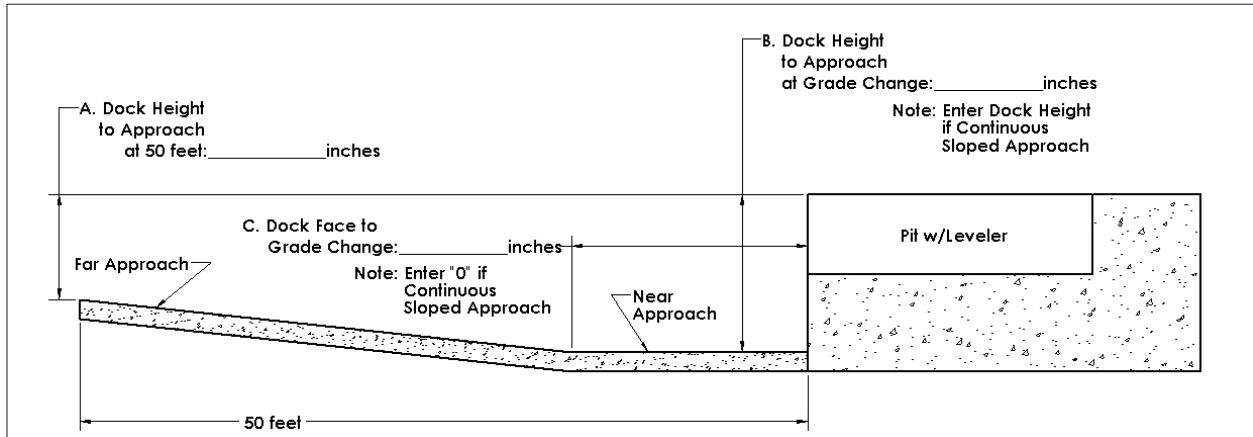
- Yes  No

**21. Drive/Approach Material at Dock Face:**

- Concrete  Asphalt  Gravel/Dirt  Other: \_\_\_\_\_

**22. Is the Approach Level or Sloped?**

- Level (Note: If Level, disregard questions A, B & C below)  Sloped (Note: If Sloped, complete questions A, B & C below)



**23. Will this application incorporate Trailer Lifts, Wheel Risers, Existing Brackets (Aftermarket Upgrade) or Obstructions on the Dock Face?**

- No  Existing Brackets (Upgrade)  Trailer Lift  Dock Face Obstructions  
 Wheel Risers

**24. Is there a trench located 12" or less from the face of the bumpers?**

- Yes  No

**25. Will manufacturer supply cantilever bracket?**

- Yes  No

**26. Will manufacturer supply floor bracing?**

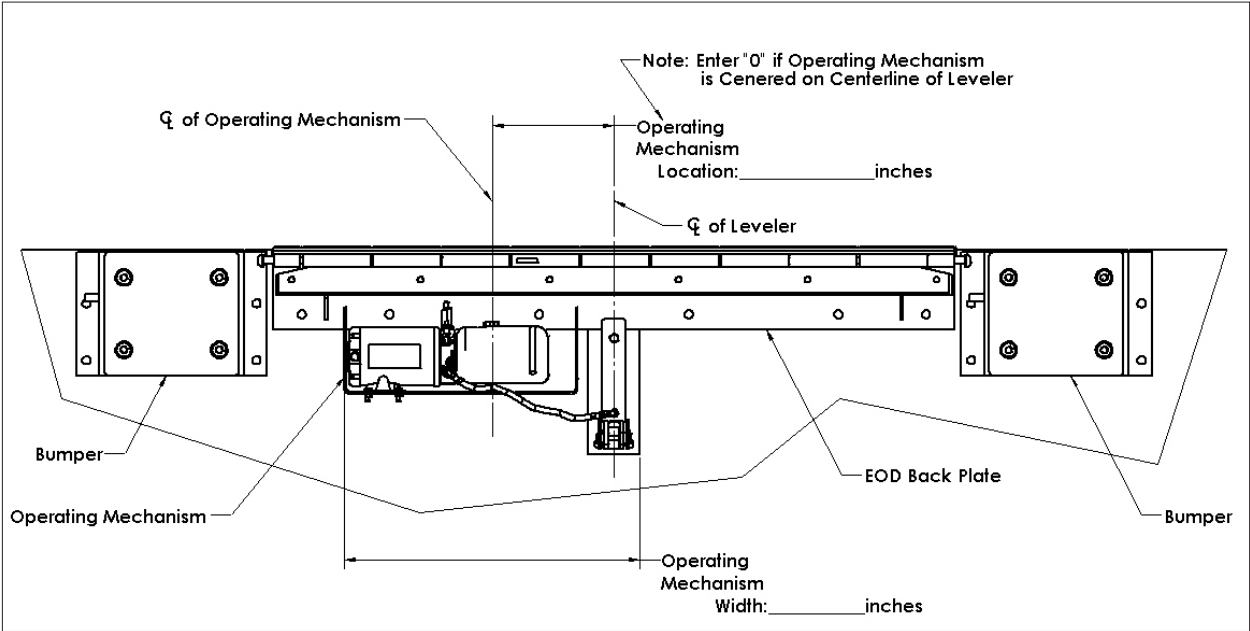
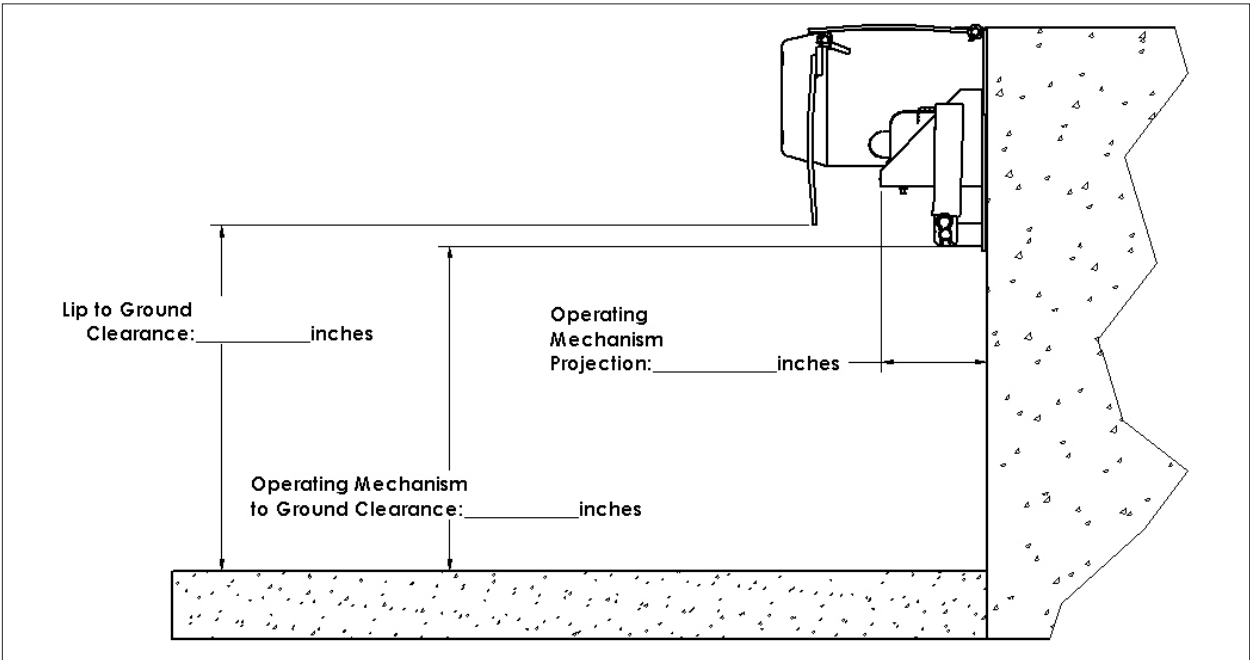
- Yes  No

**27. Will manufacturer supply additional anchors?**

- Yes  No



# THIS SECTION MUST BE COMPLETED FOR EDGE OF DOCK LEVELERS



N90W14507 Commerce Drive, Menomonee Falls, WI 53051  
 phone 262-502-1591 | 800-236-7325 | fax 262-502-1511 | www.novalocks.com